

KPA Studio EtherCAT is **the** configuring- and diagnostics tool allowing deep integration into design environments.

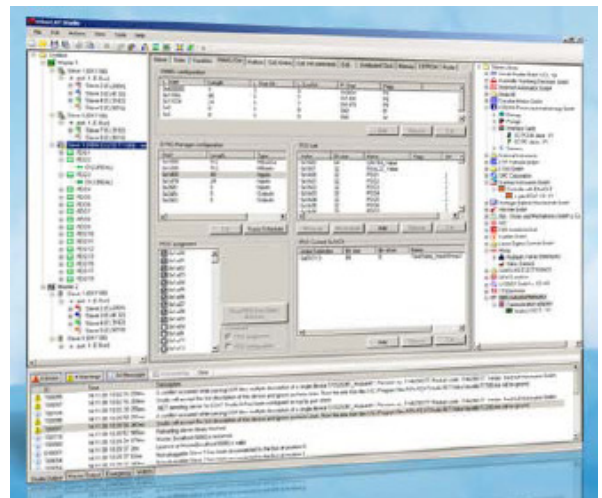
Configuring

KPA Studio EtherCAT is able to perform following operations:

- Creation of configuration file for master according to ETG specification (ENI)
- Import and Export of configurations from / to several PLC systems
- "C" – Header generation
- Creation of slave configuration information (ESI, SII) according to ETG specification
- Comparing of configuration files for EtherCAT Master and Slave

Diagnosis

- Trigger conditions for Data- and Frame-Logging
- Tracing of events of Master, Slaves (emergencies) and Studio
- Classification of events
- Measuring connection quality
- Showing of reasons for events
- Offering remedies for the event



Integration

- Based on .net technology
- Remote control
- Silent mode
- Device- and custom specific Plug-Ins
- Localization
- Brand Labeling

Licensing and support included

- Bundling with KPA EtherCAT Master
- Sample applications and documentation
- One year of technical support included

Ordering information

Product types	Name	Comment
7041 0019	KPA Studio EtherCAT	Configuration and diagnostic tool